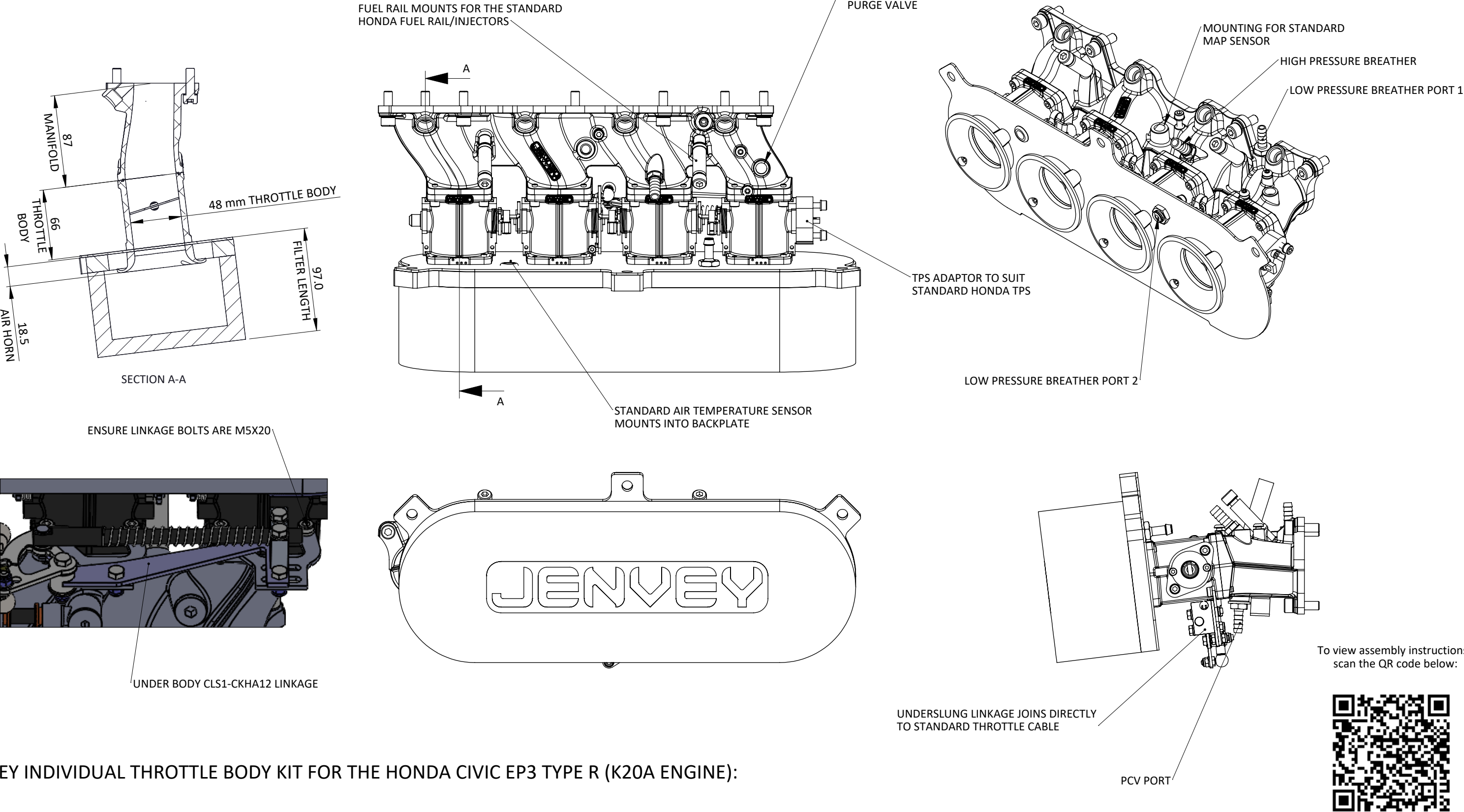


CKHA12 - HONDA CIVIC TYPE R EP3 ITB KIT



Engineered to win



To view assembly instructions, scan the QR code below:



JENVEY INDIVIDUAL THROTTLE BODY KIT FOR THE HONDA CIVIC EP3 TYPE R (K20A ENGINE):

THE KIT INCLUDES 4 x 48mm INDIVIDUAL THROTTLE BODIES, THROTTLE LINKAGE, MANIFOLD, AIR HORNS AND FILTER. IT IS DESIGNED TO FIT INSIDE THE EP3 ENGINE BAY WITHOUT MODIFICATION.

THE KIT RETAINS THE USE OF THE STANDARD FUEL RAIL, THROTTLE POSTION SENSOR, MAP SENSOR, CANISTER PURGE VALVE AND INCLUDES FITTINGS FOR THE PCV, BRAKE BOOST, OIL BREATHERS AND A FILTER FOR THE ENGINE BREATHER