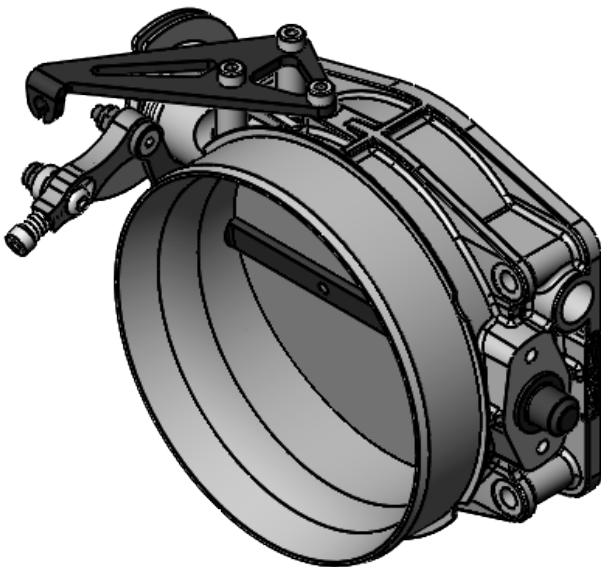
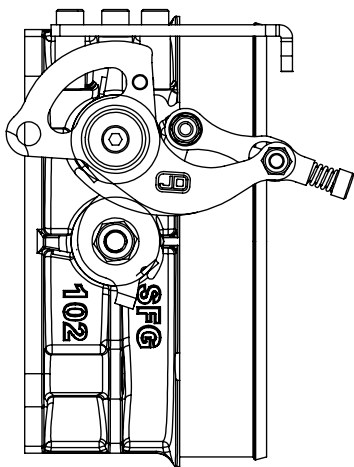
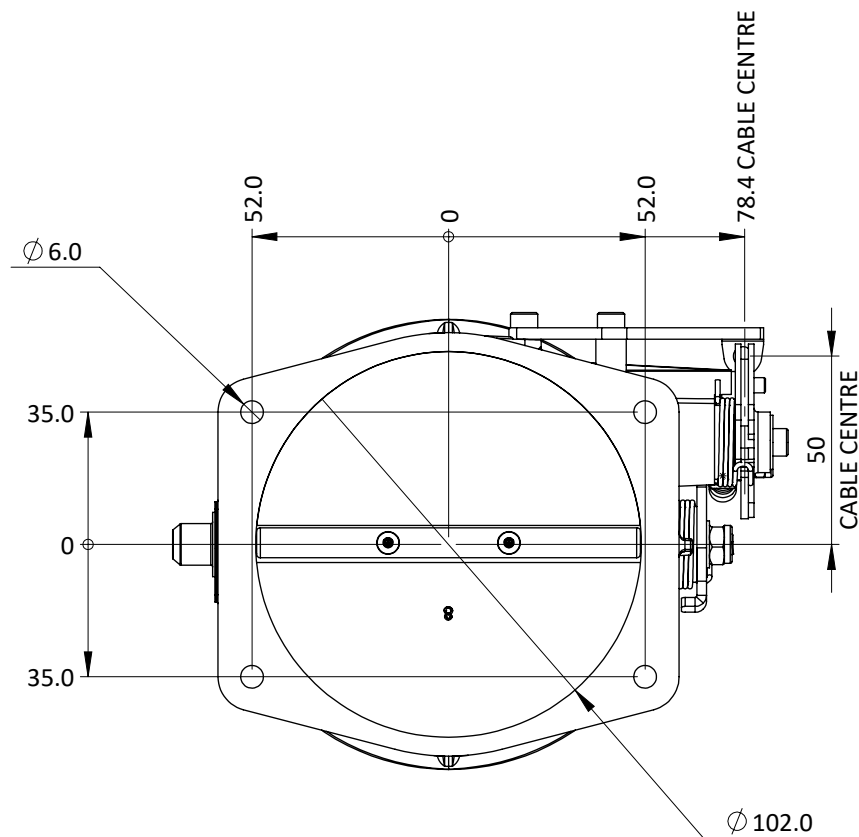
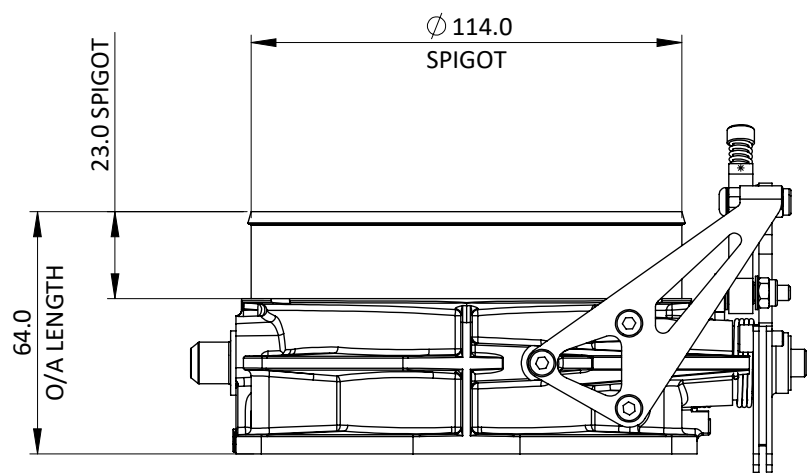


SFG102 - 102mm SINGLE THROTTLE BODY WITH INLET SPIGOT



Engineered to win



Very large single bore motorsport throttle body with 102mm bore.

Bolt pattern matches GM Chevrolet LS3 manifold.

Twin lever and spring arrangement for safety and tuneable progression.

Full throttle cable travel - 30mm

Other items; Throttle potentiometer

Frame: 1 of 1	
Version: 1	
Tel 01746 768810	© JENVEY DYNAMICS LTD. 2015
Web WWW.JENVEY.CO.UK	