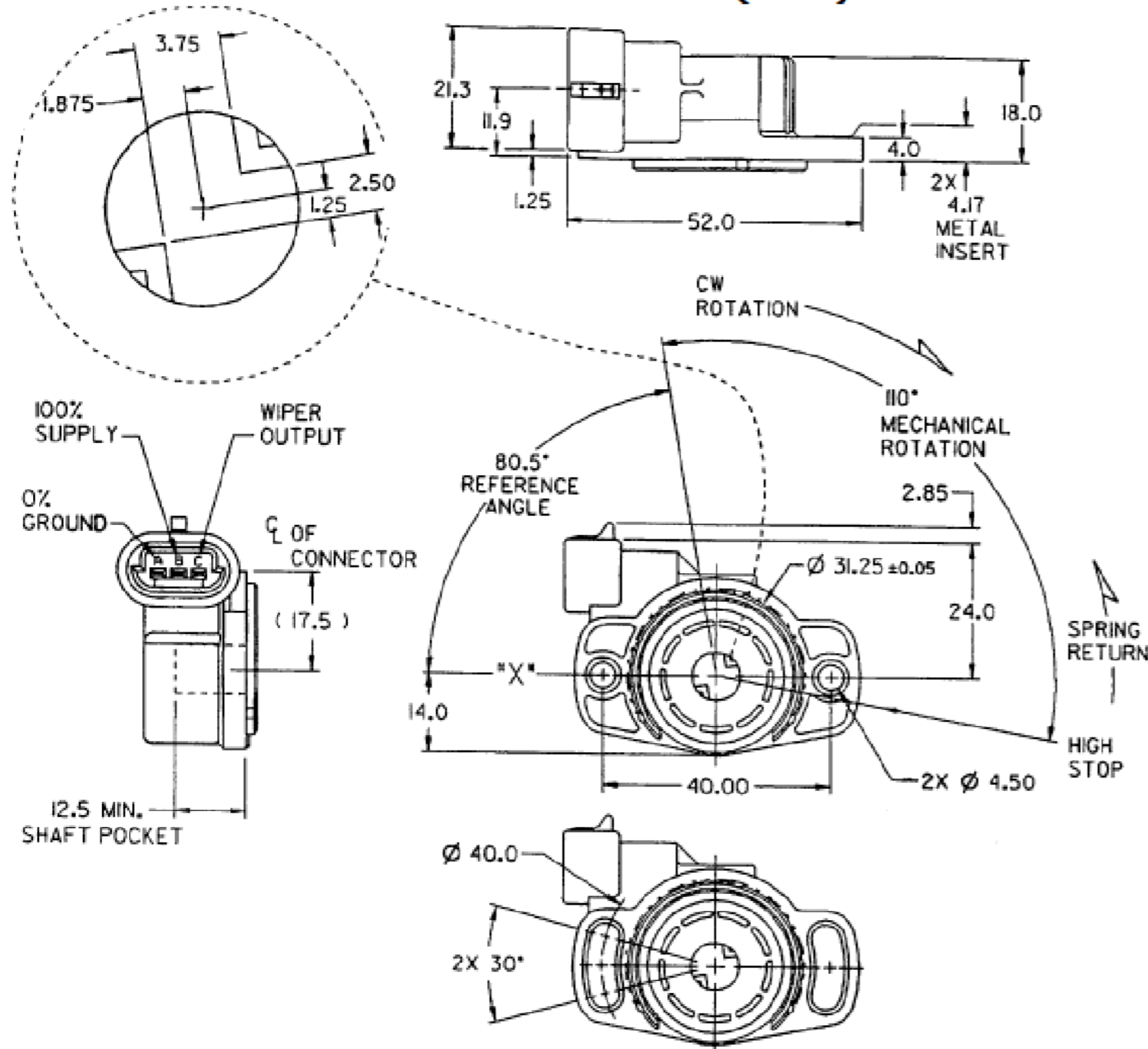


TP5 - TPS - PF2C MAGNETI MARELLI CTS

Dimensional Details (mm)



Engineered to win



TYPICAL SPECIFICATIONS

ELECTRICAL

Total Resistance:	1.2 KΩ ±30%
Linearity:	±3.0% (absolute)
Rotation Maximum:	110° Mechanical 107° Typical Electrical
Hysteresis:	≤1.0% Applied Voltage
Electrical Limit:	16 VDC Maximum
Typical Voltage:	5-10 VDC
Maximum Power Rating:	0.08 Watts

MECHANICAL

Torque-	
Start of Rotation:	> 0.020 Nm
End of Rotation:	< 0.120 Nm
Stop Strength:	0.6 Nm

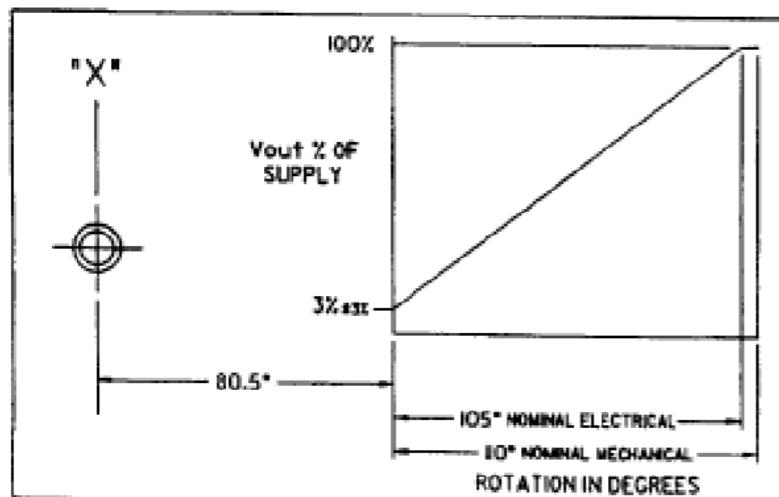
DURABILITY

Mechanical Cycling:	1 X 10 ⁶ Full Strokes 0.5 X 10 ⁶ Half Strokes 4 X 10 ⁶ Dither Strokes
Standard Vibration:	24 hrs; 3 Planes; 33 to 600 Hz; 3 - 25 g
Thermal Shock:	100 Cycles, -40° to 140°C
Temperature Range (Operating & Storage):	-30° to 125°C

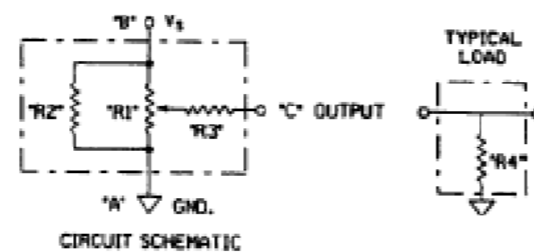
ENVIRONMENTAL

Salt Spray:	250 hrs.
Humidity:	96 hrs., 93% RH at 40°C
Resistant to gasoline, engine oil, brake fluid & antifreeze	

TYPICAL OUTPUT



ADJUSTABLE MOUNTING OPTION



R1 = 3883 Ω
R2 = 1755 Ω
R3 = 758 Ω
R4 = 188 KΩ

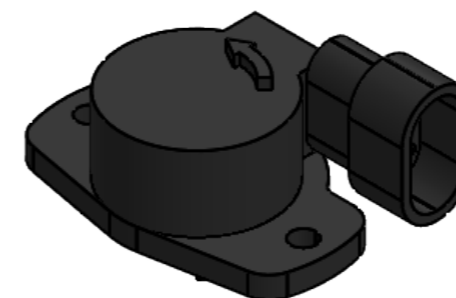
CTS - Throttle Potentiometer
Vendor Part Number: PF2C

CTS - PF2C

Connector.....Metripack 3 way
Output drive.....Clockwise when viewed from mounting face

Assembly Setup:

Throttle pot is pre loaded with 18 degrees of travel when assembled onto spindle, i.e: start angle 18 degrees
finish angle 100 degrees



Frame: 1 of 1

Version: 3

Tel 01746 768810

© JENVEY DYNAMICS LTD. 2021

Web WWW.JENVEY.CO.UK

