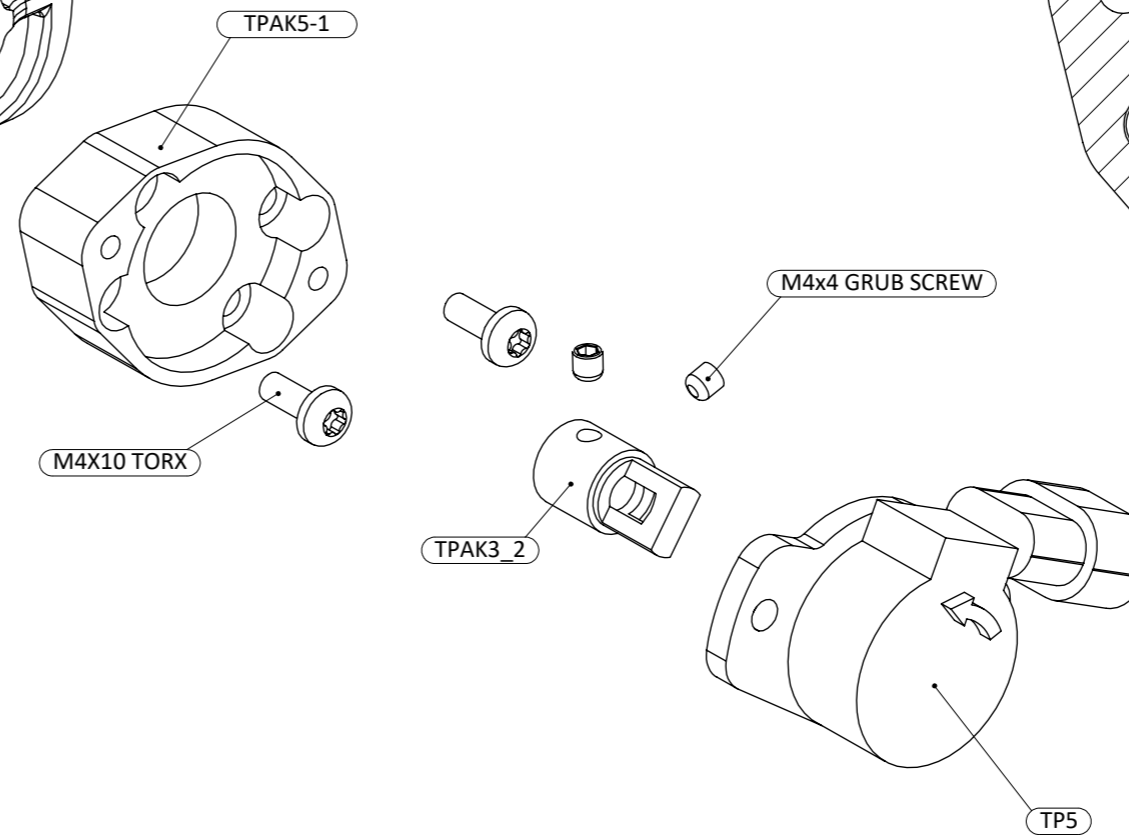
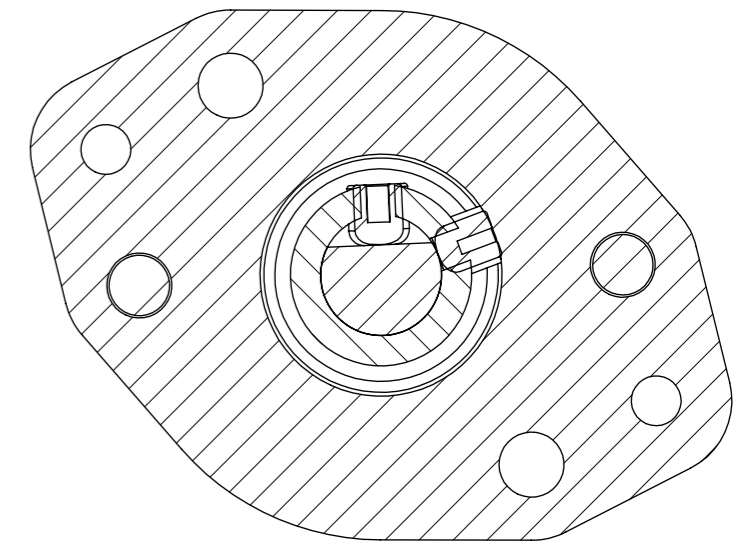


NOTE:
ENSURE THE BUTTERFLIES ARE CLOSED AND THE D-FLAT IS FACING UPWARDS AND THE ANGLE OF THE TP IS IN THE DIRECTION AS SHOWN

GRUB SCREW ORIENTATION ON A TPAK-5



WHEN FITTING A TPAK3_2 AND TPAK 5-1 TO YOUR THROTTLE BODY, IT IS RECOMMENDED TO PUT A SMALL AMOUNT OF LOCTITE 243 TO THE THREADS TO SECURE THE BOLTS IN PLACE AND ONCE THE BOLTS ARE THREADED IN, TORQUE TO 0.8NM.

TO SECURE THE TPAK 3_2 IN PLACE, SLIDE THE FITTING OVER THE SPINDLE END SO THAT THE TOP GRUB SCREW THREADS ARE PERPENDICULAR WITH THE SPINDLE FLAT. IT IS RECOMMENDED THAT A SMALL AMOUNT OF LOCTITE 243 IS APPLIED TO THE GRUB SCREWS, THEN THREAD IN UNTIL TIGHT.

Frame: 1 of 1	
Version: 1	
Tel 01746 768810	© JENVEY DYNAMICS LTD. 2021
Web WWW.JENVEY.CO.UK	